









ISSUED FOR PROGRESS REVIEW	
ISSUED FOR PLAN CHECK	
ISSUED FOR PERMIT	
ISSUED FOR BID	05/26/22
ISSUED FOR CONSTRUCTION	

AOR:



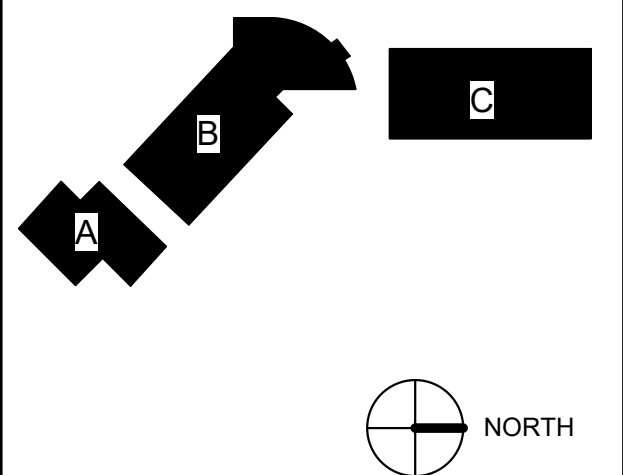
117 PARK PLACE  
POINT RICHMOND  
CALIFORNIA 94801  
(510) 236-7435  
[www.intres.com](http://www.intres.com)

PROJECT:

**BAHIA VISTA  
ELEMENTARY  
SCHOOL -  
ROOFING  
UPGRADE AND  
IMPROVEMENTS**

125 BAHIA WAY  
SAN RAFAEL, CA. 94901

## KEY PLAN



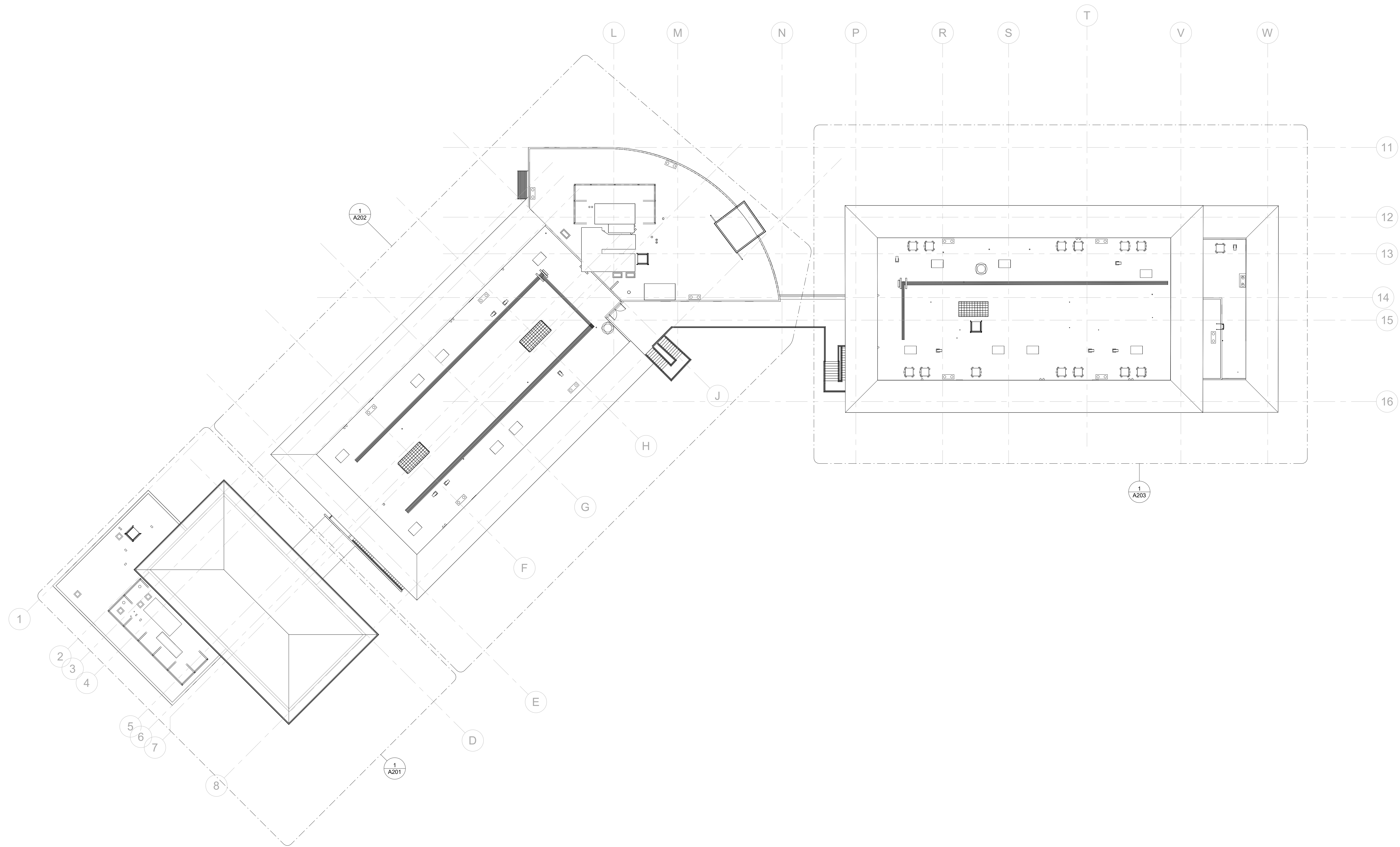
SHEET TITLE:

OVERALL ROOF  
PLAN

PROJ. NO.	2020-036-01	
PREPARATION AND REVIEW		
DRAWN BY:	Author	
DESIGNER:	Designer	
PROJ MGR:	AMB	
PEER REVIEW	Checker	
SHEET NUMBER:		

A102

OF



1 OVERALL ROOF PLAN  
1/16" = 1'-0"

ISSUED FOR PROGRESS REVIEW	
ISSUED FOR PLAN CHECK	
ISSUED FOR PERMIT	
ISSUED FOR BID	05/26/22
ISSUED FOR CONSTRUCTION	

**AOR:**



117 PARK PLACE  
POINT RICHMOND  
CALIFORNIA 94801  
(510) 236-7435  
www.intres.com

BAHIA VISTA  
ELEMENTARY  
SCHOOL -  
ROOFING  
UPGRADE AND  
IMPROVEMENTS

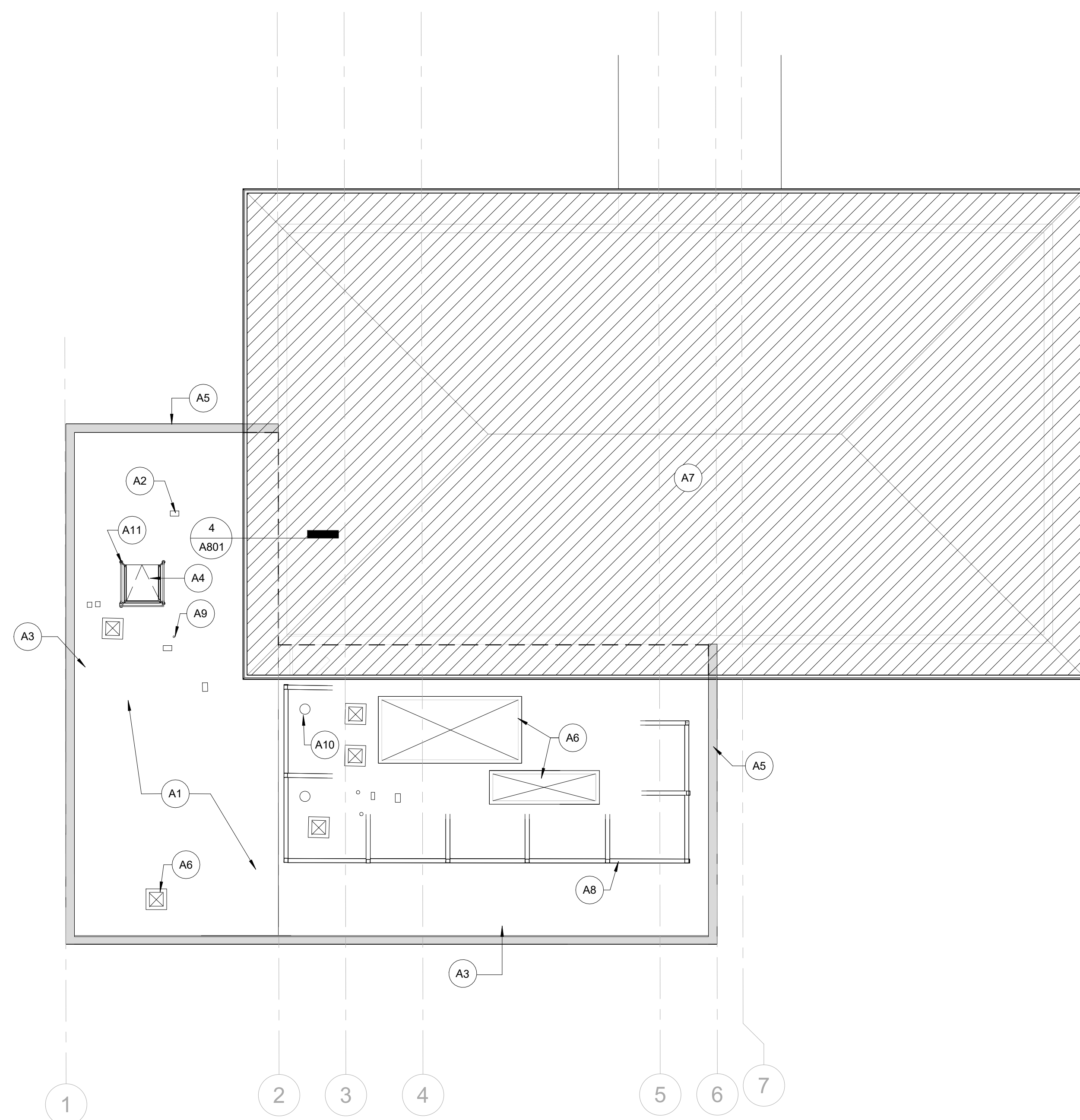
125 BAHIA WAY  
SAN RAFAEL, CA. 94901

A compass rose with a circle divided into four quadrants by a vertical and a horizontal line. The right-pointing arrow is labeled "NORTH".

## ROOF PLAN - BUILDING A

PROJ. NO.	2020-036-01	
PREPARATION AND REVIEW		
DRAWN BY:	Author	
DESIGNER:	Designer	
PROJ MGR:	AMB	
PEER REVIEW	Checker	
SHEET NUMBER:		

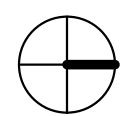
OF



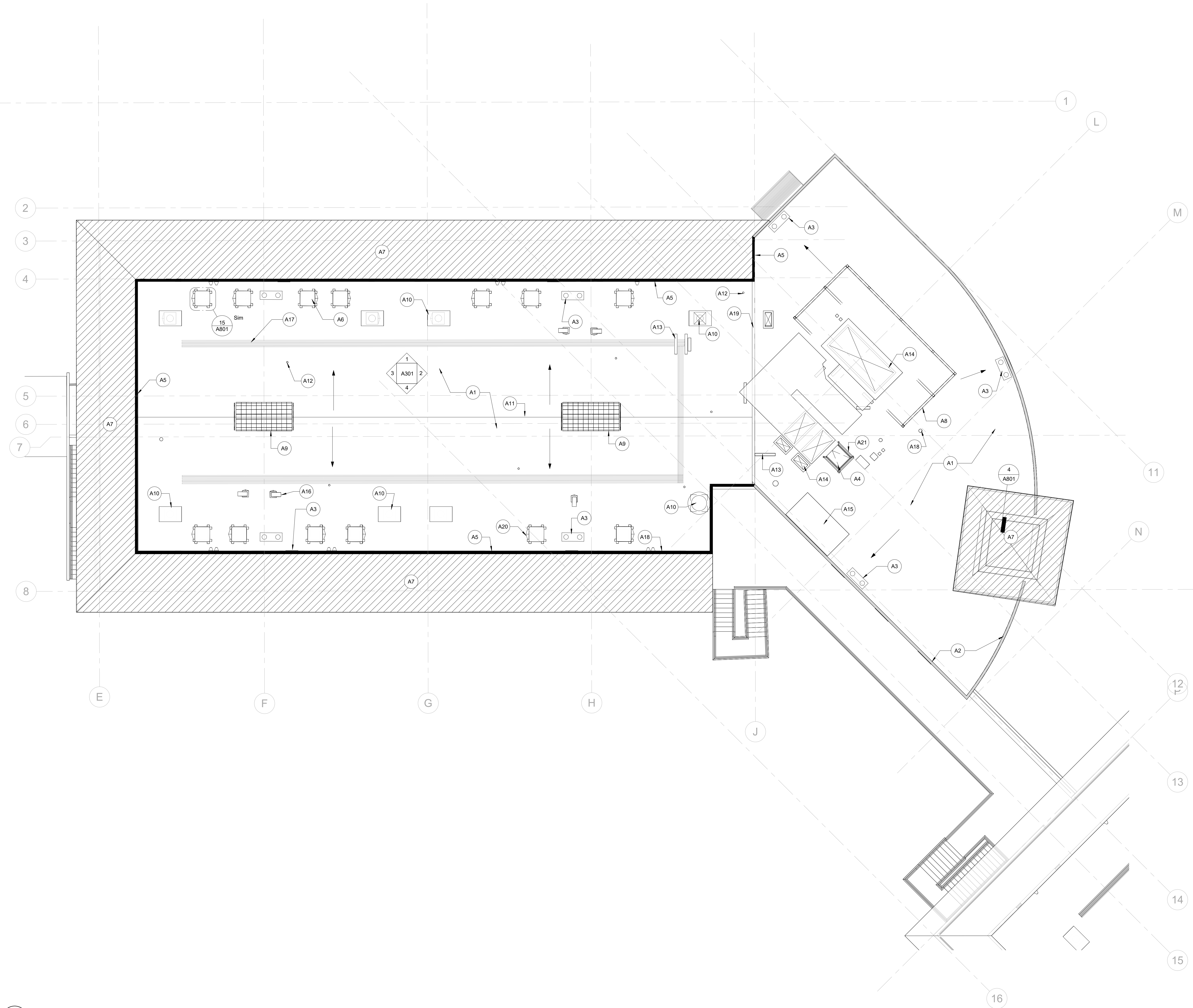
A1	SILICONE ROOF COATING OVER ENTIRE (E) LOW SLOPED ROOF, TYP.
A2	(E) SLEEPER SEE DETAIL 11 / A801
A3	(E) ROOF AND OVERFLOW DRAINS, TYP. SEE DETAIL 16 / A801
A4	(E) ROOF HATCH TO REMAIN. REMOVE (E) LADDER EXTENSION, 3 / A802
A5	(N) METAL COPING, TYP SEE DETAIL 2 / A801
A6	(E) MECHANICAL UNIT AND CURB, TYP. 13 / A801
A7	(E) METAL ROOFING, N.I.C.
A8	(E) MECHANICAL SCREEN FRAME 5 / A802
A9	(E) PIPE PENETRATION, TYP14 / A801
A10	(E) VENT PENETRATION, TYP 5 / A801
A11	ROOF HATCH GUARDRAIL 2 / A802

 METAL COPING AT LOW PARAPET

 (E) METAL ROOF, N.I.C.







ROOF PLAN KEY NOTES - BUILDING B

- A1 SILICONE ROOF COATING OVER ENTIRE (E) LOW SLOPED ROOF, TYP.
- A2 (N) METAL COPING AT LOW PARAPET 1 / A801
- A3 NEW FLASHING AT ROOF AND OVERFLOW DRAINS, TYP. SEE DETAIL 16 / A801
- A4 (E) ROOF HATCH TO REMAIN. REMOVE (E) LADDER EXTENSION. 3 / A802
- A5 (E) METAL COPING AT MANSARD ROOF WALL TO REMAIN. PROVIDE SILICONE TAPE SEAL AT ALL JOINTS, DOW 123 OR EQUAL. 6 / A801
- A6 (E) MECHANICAL UNIT ON SLEEPER, TYP. 11 / A801
- A7 (E) METAL ROOF, N.I.C.
- A8 (E) MECHANICAL SCREEN FRAME 5 / A802
- A9 (E) SKYLIGHT & CURB, TYP. 9 / A801
- A10 (E) GRAVITY RELIEF HOOD AND CURB, TYP. 13 / A801
- A11 (E) RIDGE LINE
- A12 (E) PIPE PENETRATIONS, TYP. 14 / A801
- A13 (E) SLEEPER SEE DETAIL 11 / A801 SIM
- A14 (E) DUCT/MECHANICAL UNIT ON CURB, TYP. 13 / A801
- A15 (E) RAISED PLATFORM WITH (N) SILICONE ROOF COATING
- A16 (E) HOOD PIPING, SEAL OPENING AROUND PIPES 13 / A801
- A17 (E) CONDUIT, TYP. 10 / A801
- A18 (E) VENT PENETRATION 5 / A801
- A19 (E) AREA DIVIDER SEE DETAIL 3 / A801
- A20 (N) CRICKET WITH FLASHING SEE 11 / A801
- A21 ROOF HATCH GUARDRAIL, TYP SEE 2 / A802

LEGEND:

- METAL COPING AT LOW PARAPET
- (E) METAL COPING AT MANSARD ROOF WALL TO REMAIN
- (E) METAL ROOF, N.I.C.

REVISION	DESCRIPTION	INITIAL	DATE

ISSUED FOR PROGRESS REVIEW	
ISSUED FOR PLAN CHECK	
ISSUED FOR PERMIT	
ISSUED FOR BID	05/26/22
ISSUED FOR CONSTRUCTION	

SEAL:

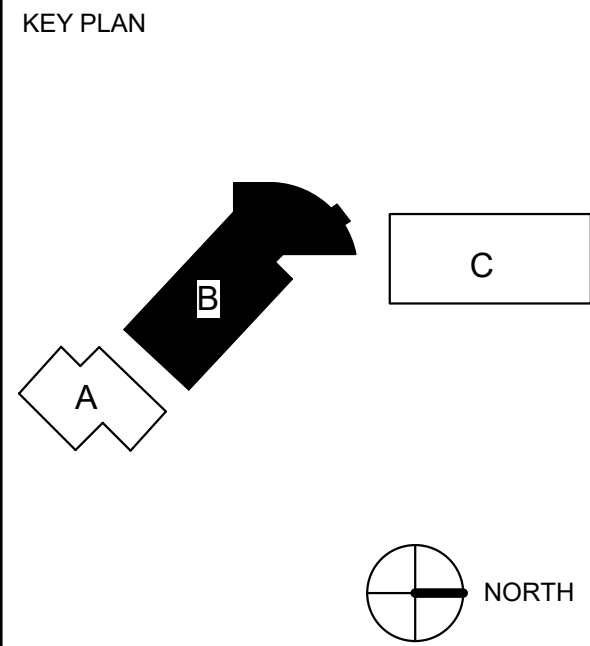
AOR:



117 PARK PLACE  
POINT RICHMOND  
CALIFORNIA 94801  
(510) 236-7435  
www.intres.com

PROJECT:  
**BAHIA VISTA  
ELEMENTARY  
SCHOOL -  
ROOFING  
UPGRADE AND  
IMPROVEMENTS**

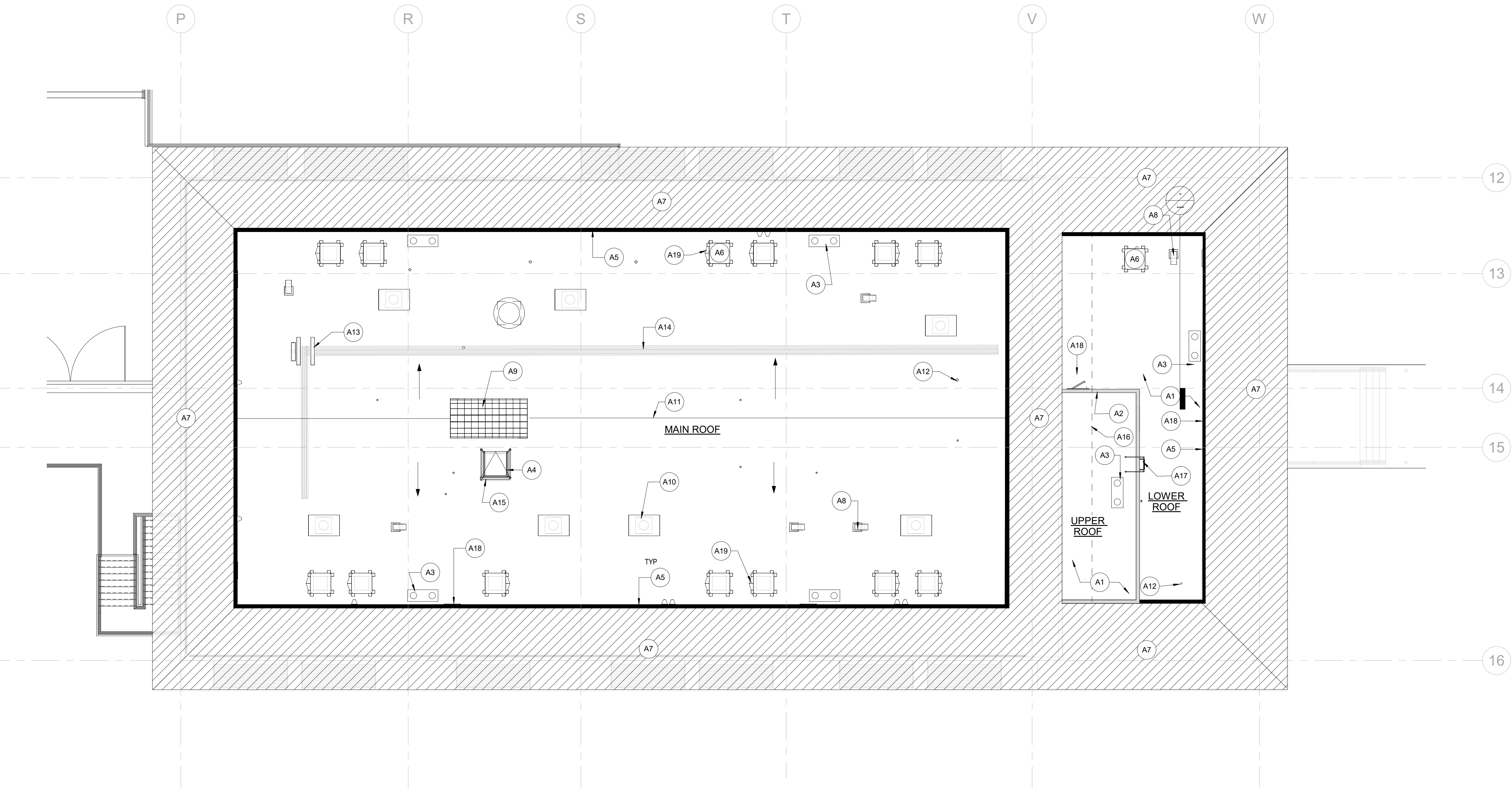
125 BAHIA WAY  
SAN RAFAEL, CA. 94901



SHEET TITLE:  
**ROOF PLAN -  
BUILDING B**

PROJ. NO.	2020-036-01
PREPARATION AND REVIEW	
DRAWN BY:	MT
DESIGNER:	GYN
PROJ MGR:	AMB
PEER REVIEW	Checker
SHEET NUMBER:	

**A202**



- ROOF PLAN KEY NOTES - BUILDING C**
- A1 SILICONE ROOF COATING OVER ENTIRE (E) LOW SLOPED ROOF. TYP.
  - A2 (N) METAL COPING AT LOW PARAPET 2 / A801
  - A3 (N) FLASHING AT (E) ROOF AND OVERFLOW DRAINS. TYP.16 / A801
  - A4 (E) ROOF HATCH TO REMAIN. REMOVE (E) LADDER EXTENSION. 3 / A802
  - A5 (E) METAL COPING AT MANSARD ROOF WALL TO REMAIN; PROVIDE SILICONE TAPE SEAL AT ALL JOINTS. DOW 123 OR EQUAL 6 / A801
  - A6 (E) MECHANICAL UNIT ON SLEEPER. TYP. 11 / A801
  - A7 (E) METAL ROOF. N.I.C.
  - A8 (E) HOOD PIPING. SEAL OPENING AROUND PIPES 13 / A801
  - A9 (E) SKYLIGHT & CURB. 13 / A801
  - A10 (E) GRAVITY RELIEF HOOD AND CURB. TYP 13 / A801
  - A11 (E) RIDGE LINE
  - A12 (E) PIPE PENETRATIONS. TYP. 14 / A801
  - A13 (E) SLEEPER 11 / A801
  - A14 (E) CONDUIT. TYP 10 / A801
  - A15 ROOF HATCH GUARDRAIL 2 / A802
  - A16 LINE OF (E) ROOF ABOVE
  - A17 (E) ROOF ACCESS LADDER
  - A18 (E) DOOR 11 / A801 SIM
  - A19 (N) CRICKET WITH FLASHING. SEE 1 / A801

- LEGEND:**
- METAL COPING AT LOW PARAPET
  - (E) METAL COPING AT MANSARD ROOF WALL TO REMAIN
  - (E) METAL ROOF. N.I.C.

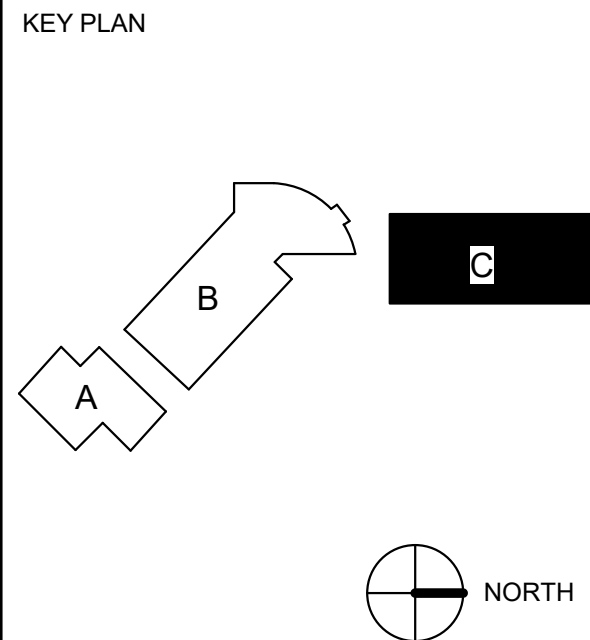


117 PARK PLACE  
POINT RICHMOND  
CALIFORNIA 94801  
(510) 236-7435  
www.intres.com

PROJECT:

**BAHIA VISTA  
ELEMENTARY  
SCHOOL -  
ROOFING  
UPGRADE AND  
IMPROVEMENTS**

125 BAHIA WAY  
SAN RAFAEL, CA. 94901



SHEET TITLE:

**ROOF PLAN -  
BUILDING C**

PROJ. NO. 2020-036-01

PREPARATION AND REVIEW

DRAWN BY: MT

DESIGNER: GYN

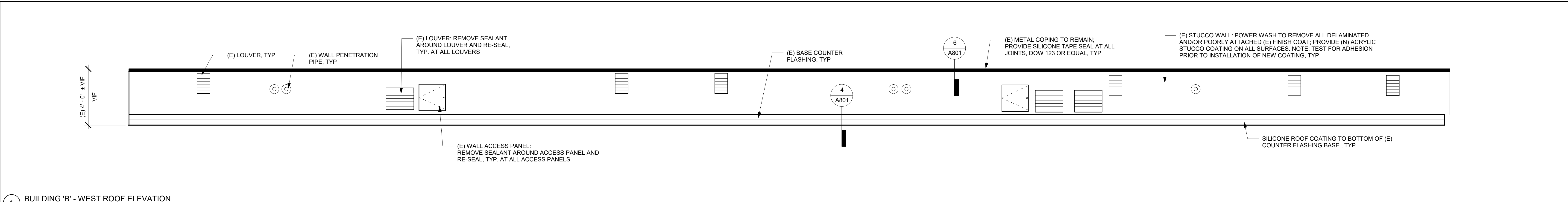
PROJ MGR: AMB

PEER REVIEW: Checker

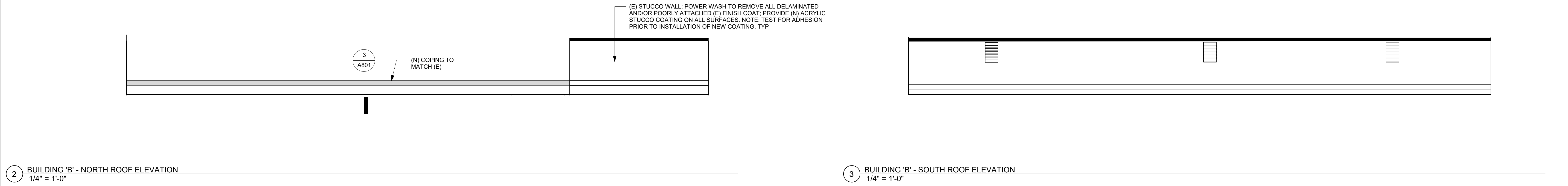
SHEET NUMBER:

**A203**



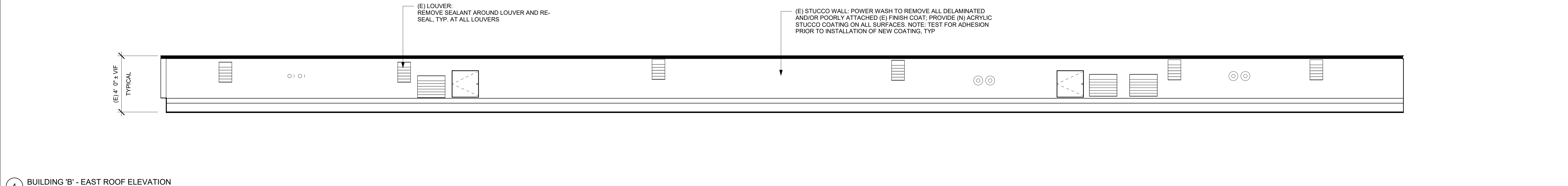


1 BUILDING 'B' - WEST ROOF ELEVATION  
1/4" = 1'-0"

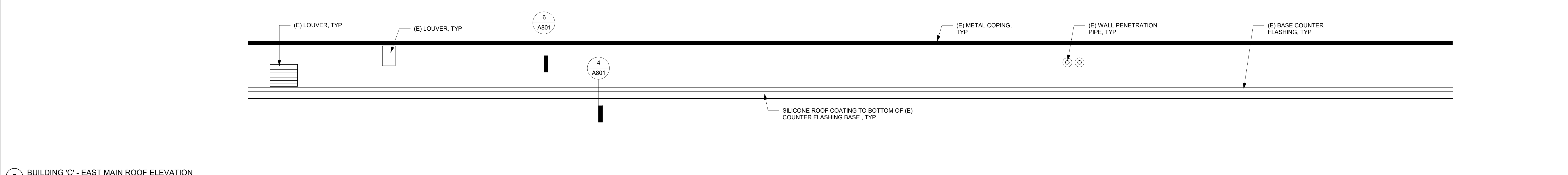


2 BUILDING 'B' - NORTH ROOF ELEVATION  
1/4" = 1'-0"

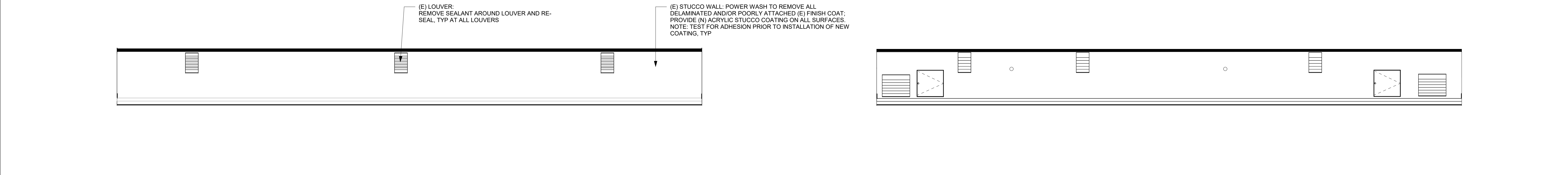
3 BUILDING 'B' - SOUTH ROOF ELEVATION  
1/4" = 1'-0"



4 BUILDING 'B' - EAST ROOF ELEVATION  
1/4" = 1'-0"

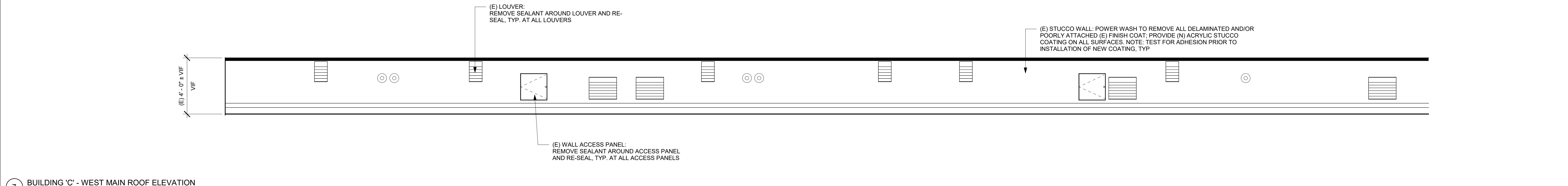


5 BUILDING 'C' - EAST MAIN ROOF ELEVATION  
1/4" = 1'-0"



6 BUILDING 'C' - NORTH MAIN ROOF ELEVATION  
1/4" = 1'-0"

8 BUILDING 'C' - SOUTH MAIN ROOF ELEVATION  
1/4" = 1'-0"



7 BUILDING 'C' - WEST MAIN ROOF ELEVATION  
1/4" = 1'-0"

REVISION	DESCRIPTION	INITIAL	DATE

ISSUED FOR PROGRESS REVIEW	
ISSUED FOR PLAN CHECK	
ISSUED FOR PERMIT	
ISSUED FOR BID	05/26/22
ISSUED FOR CONSTRUCTION	

SEAL:

AOR:



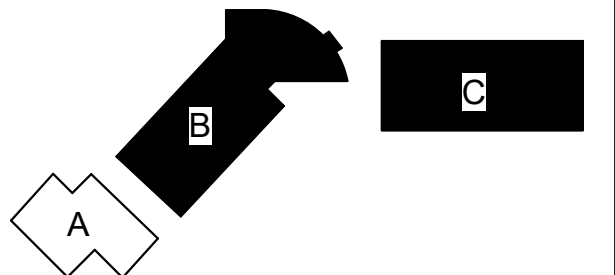
117 PARK PLACE  
POINT RICHMOND  
CALIFORNIA 94801  
(510) 236-7435  
www.intres.com

PROJECT:

BAHIA VISTA  
ELEMENTARY  
SCHOOL -  
ROOFING  
UPGRADE AND  
IMPROVEMENTS

125 BAHIA WAY  
SAN RAFAEL, CA. 94901

KEY PLAN



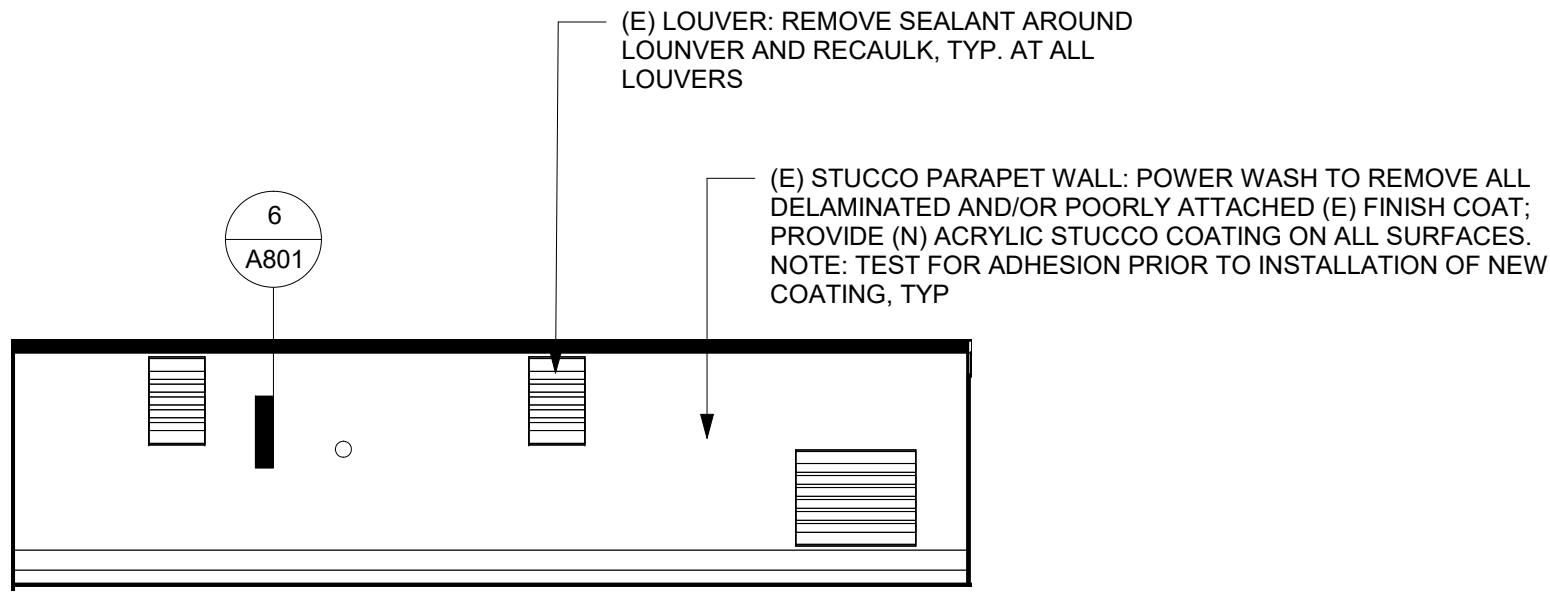
SHEET TITLE:

ROOF  
ELEVATIONS

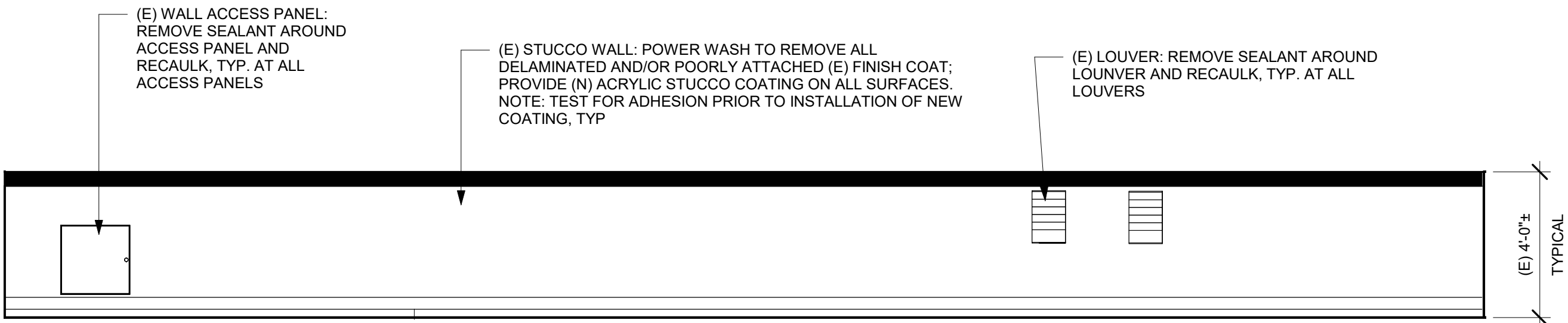
PROJ. NO.	2020-036-01
PREPARATION AND REVIEW	
DRAWN BY:	Author
DESIGNER:	Designer
PROJ MGR:	AMB
PEER REVIEW:	Checker
SHEET NUMBER:	

A301

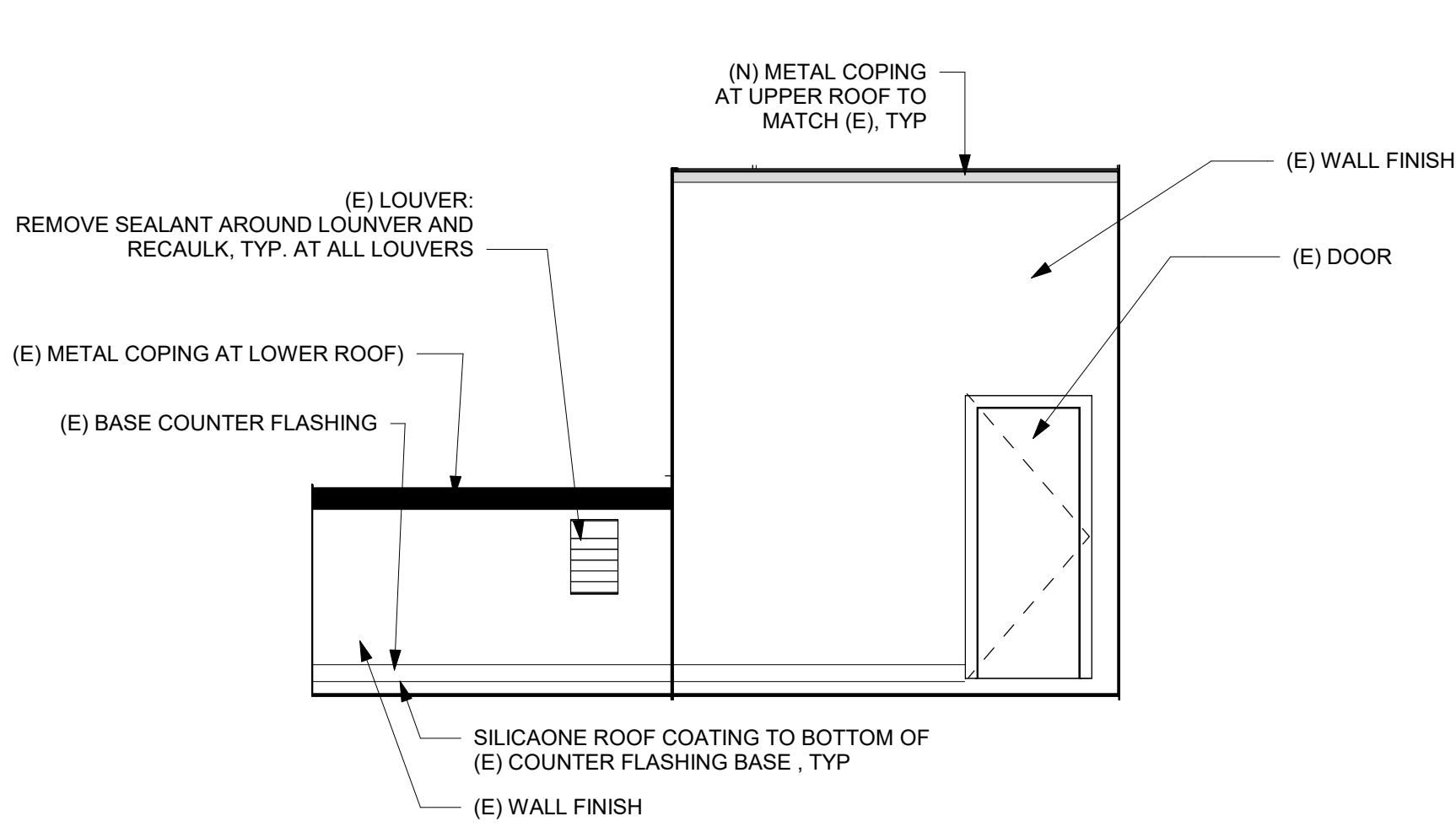
OF



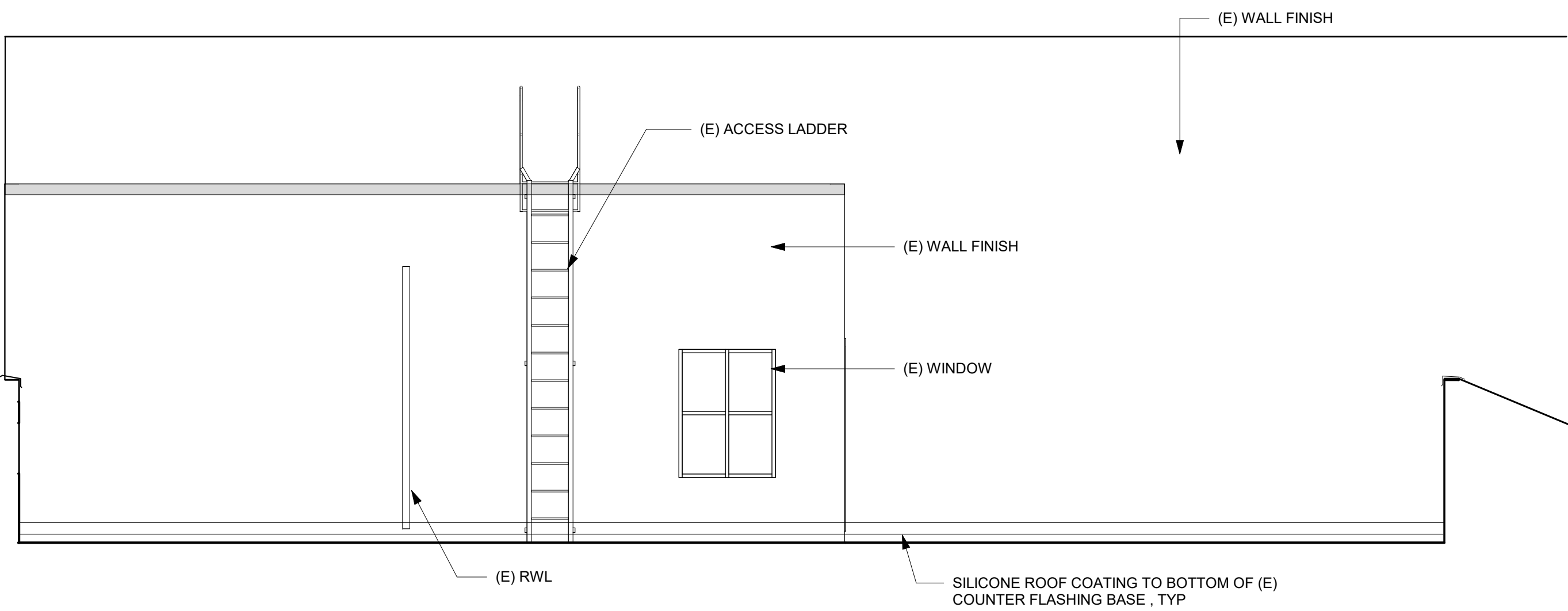
1 BUILDING 'C' - WEST LOWER ROOF ELEVATION  
1/4" = 1'-0"



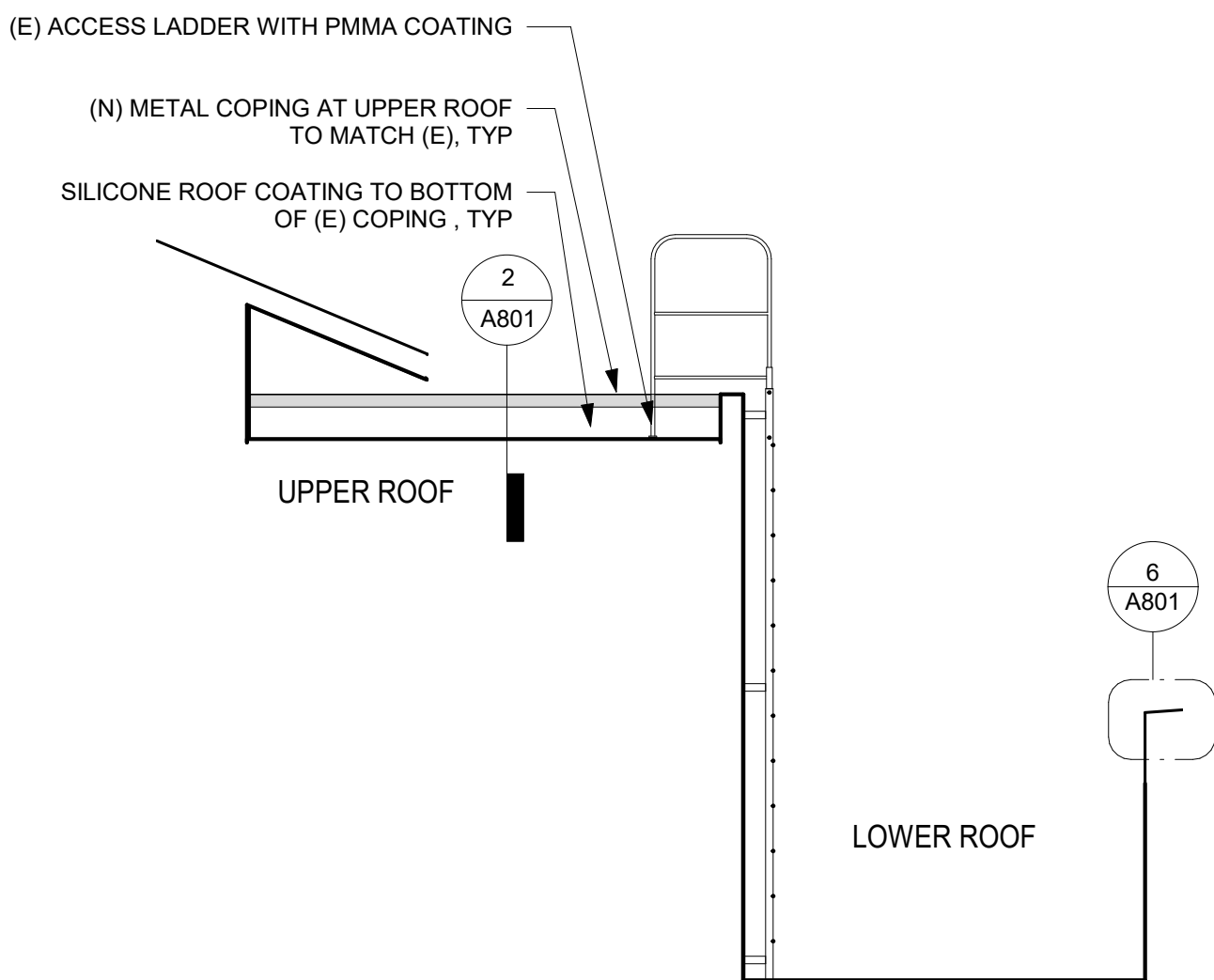
2 BUILDING 'C' - NORTH LOWER ROOF ELEVATION  
1/4" = 1'-0"



3 BUILDING 'C' - EAST LOWER ROOF ELEVATION  
1/4" = 1'-0"



4 BUILDING 'C' - SOUTH LOWER ROOF ELEVATION  
1/4" = 1'-0"



5 PARTIAL (E) BUILDING 'C' SECTION  
1/4" = 1'-0"

REVISION	DESCRIPTION	INITIAL	DATE
ISSUED FOR PROGRESS REVIEW			
ISSUED FOR PLAN CHECK			
ISSUED FOR PERMIT			
ISSUED FOR BID			
ISSUED FOR CONSTRUCTION			
SEAL:			

AOR:

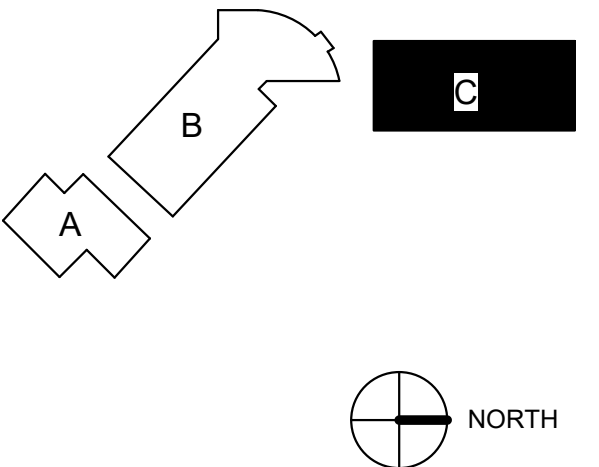


117 PARK PLACE  
POINT RICHMOND  
CALIFORNIA 94801  
(510) 236-7435  
www.intres.com

PROJECT:  
**BAHIA VISTA  
ELEMENTARY  
SCHOOL -  
ROOFING  
UPGRADE AND  
IMPROVEMENTS**

125 BAHIA WAY  
SAN RAFAEL, CA. 94901

KEY PLAN



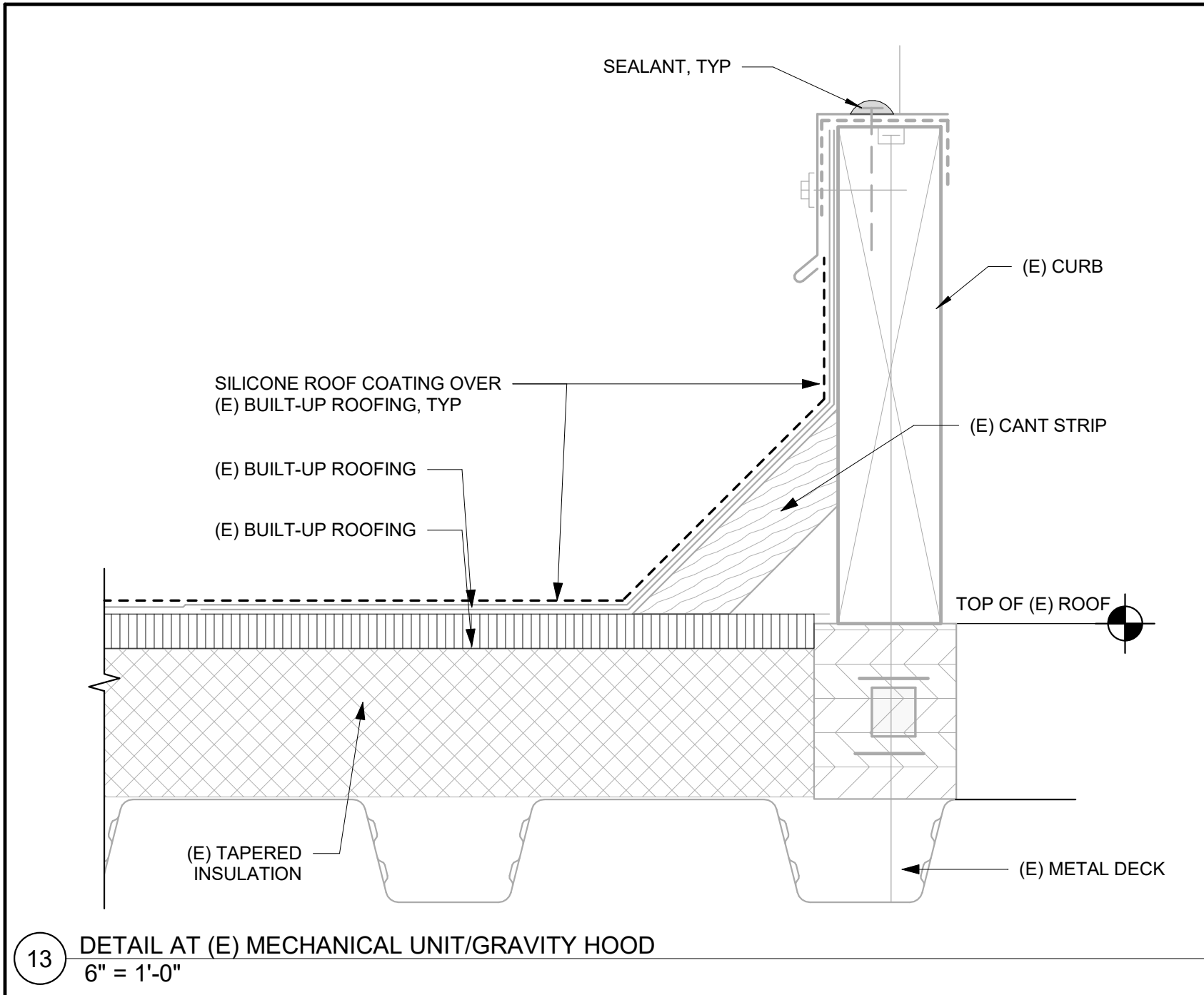
SHEET TITLE:  
**ROOF  
ELEVATIONS &  
SECTION**

PROJ. NO.	2020-036-01
PREPARATION AND REVIEW	
DRAWN BY:	MT
DESIGNER:	GYN
PROJ MGR:	AMB
PEER REVIEW	Checker
SHEET NUMBER:	

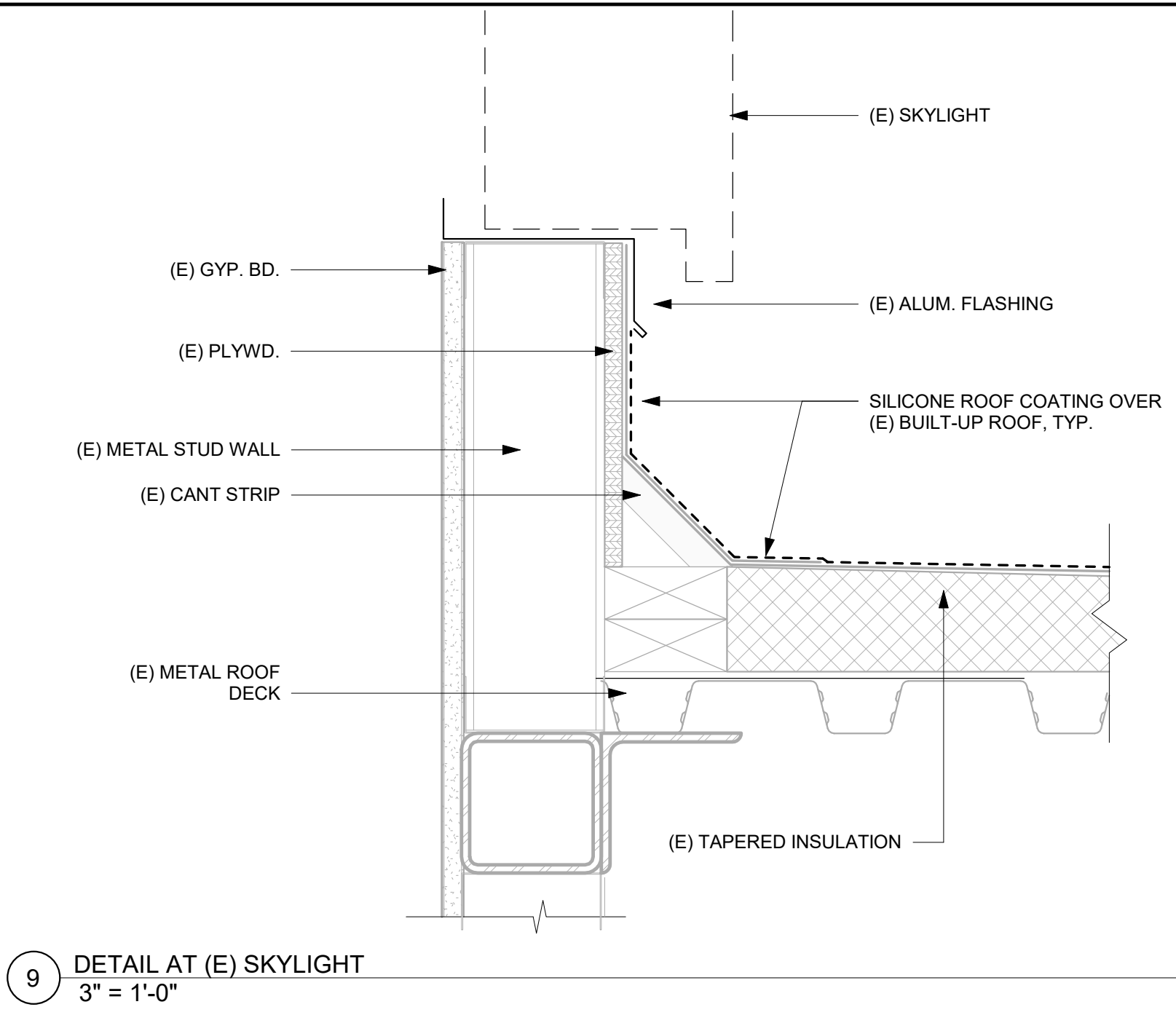
**A302**

OF

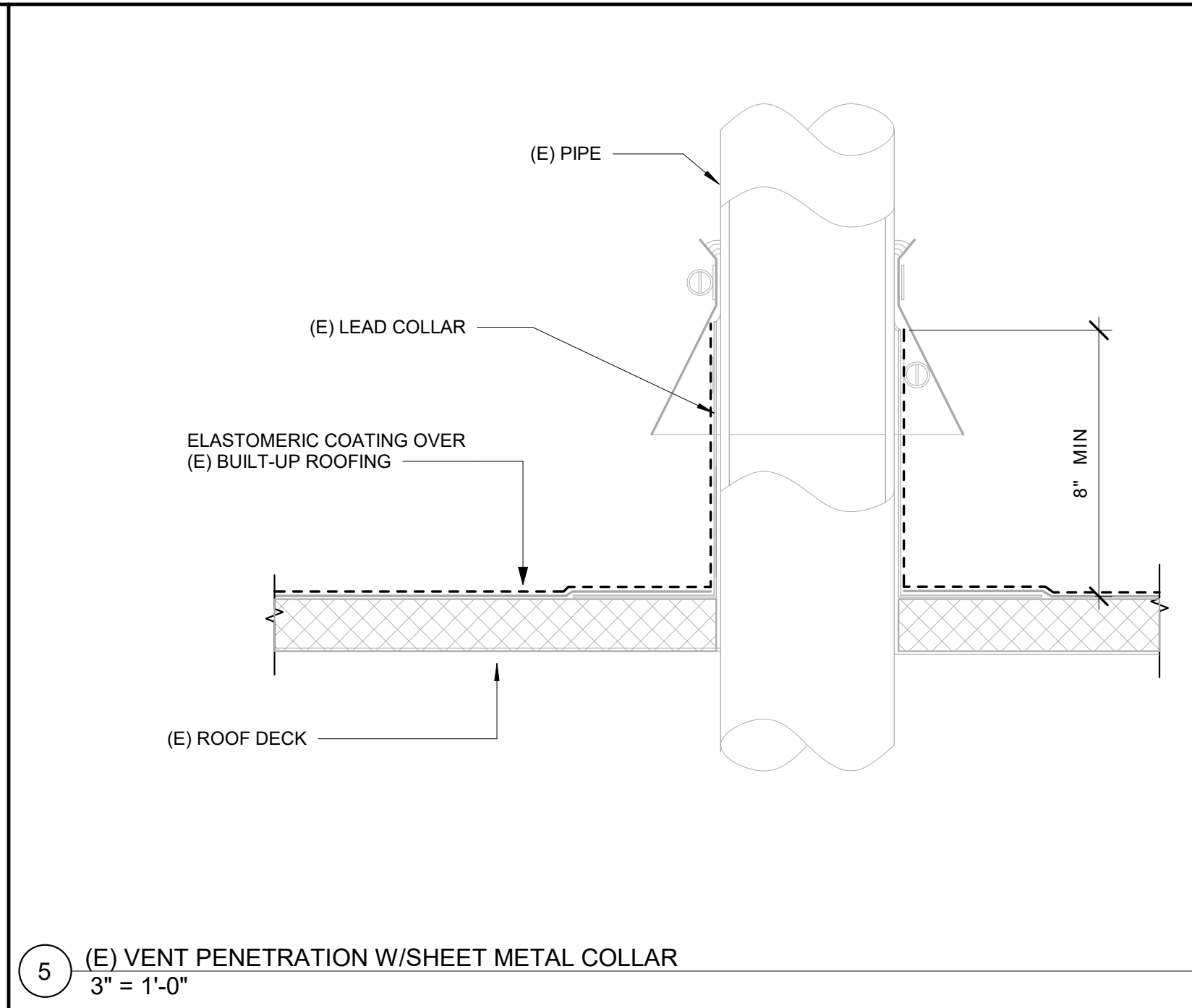




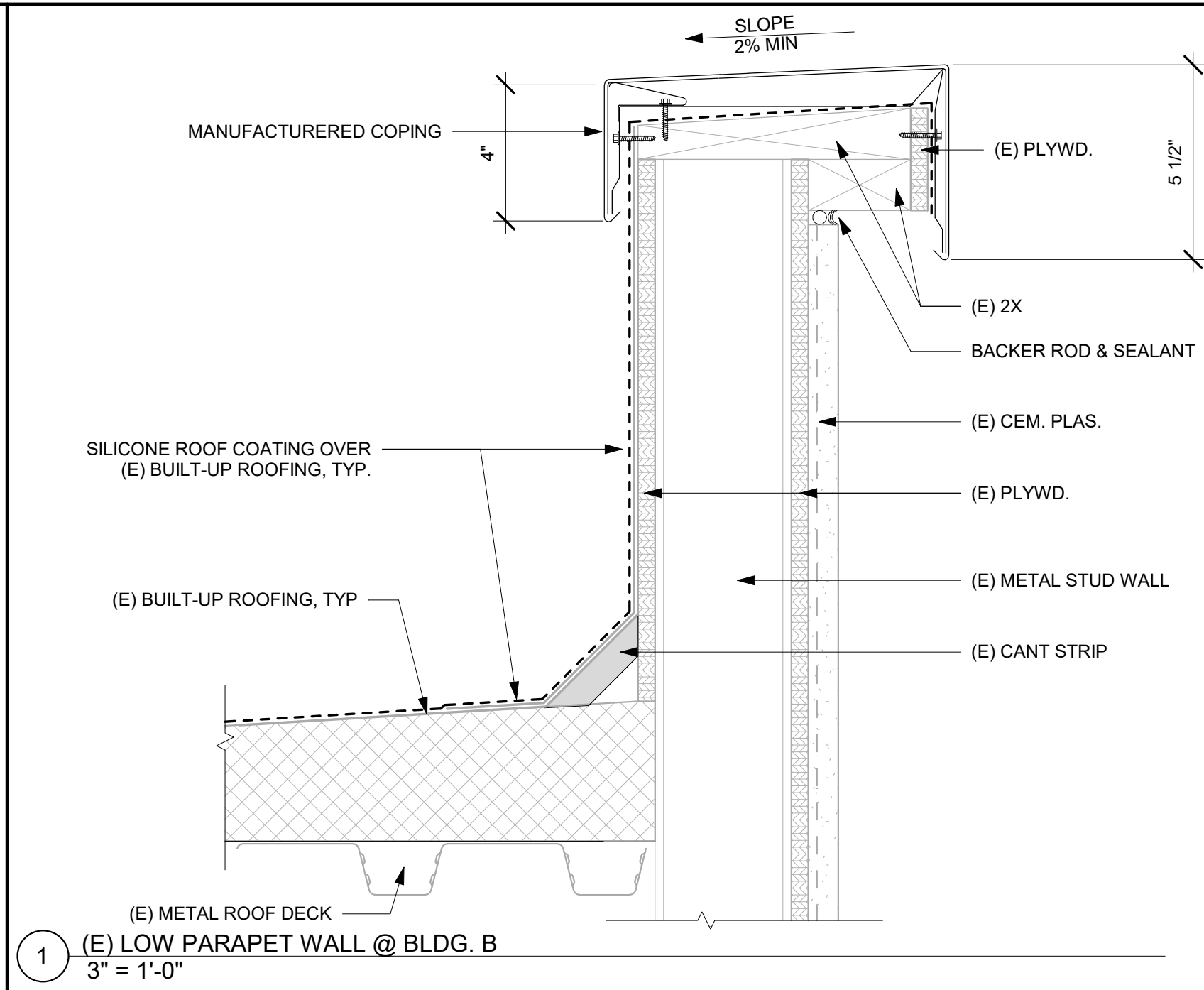
13 DETAIL AT (E) MECHANICAL UNIT/GRAVITY HOOD  
6" = 1'-0"



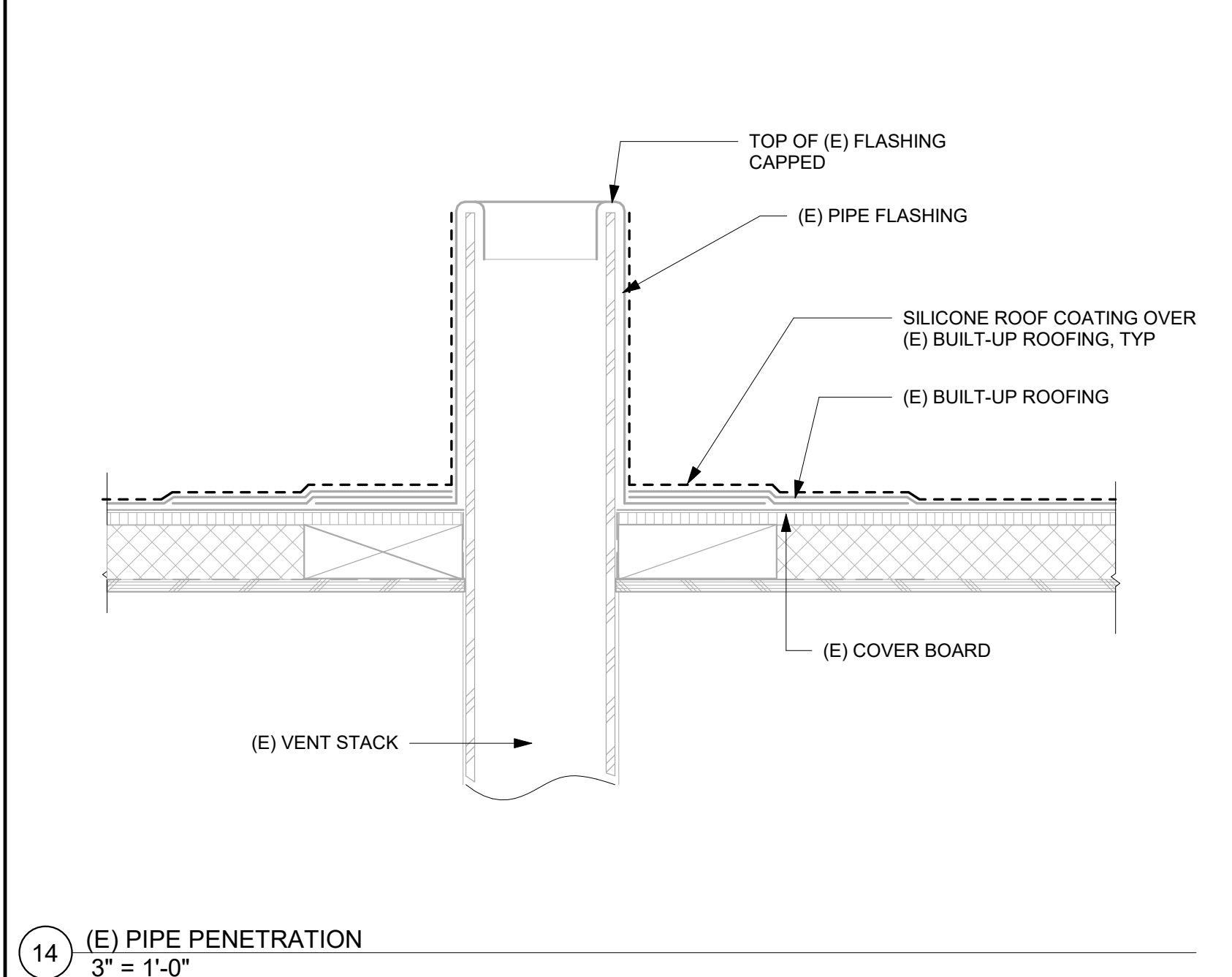
9 DETAIL AT (E) SKYLIGHT  
3" = 1'-0"



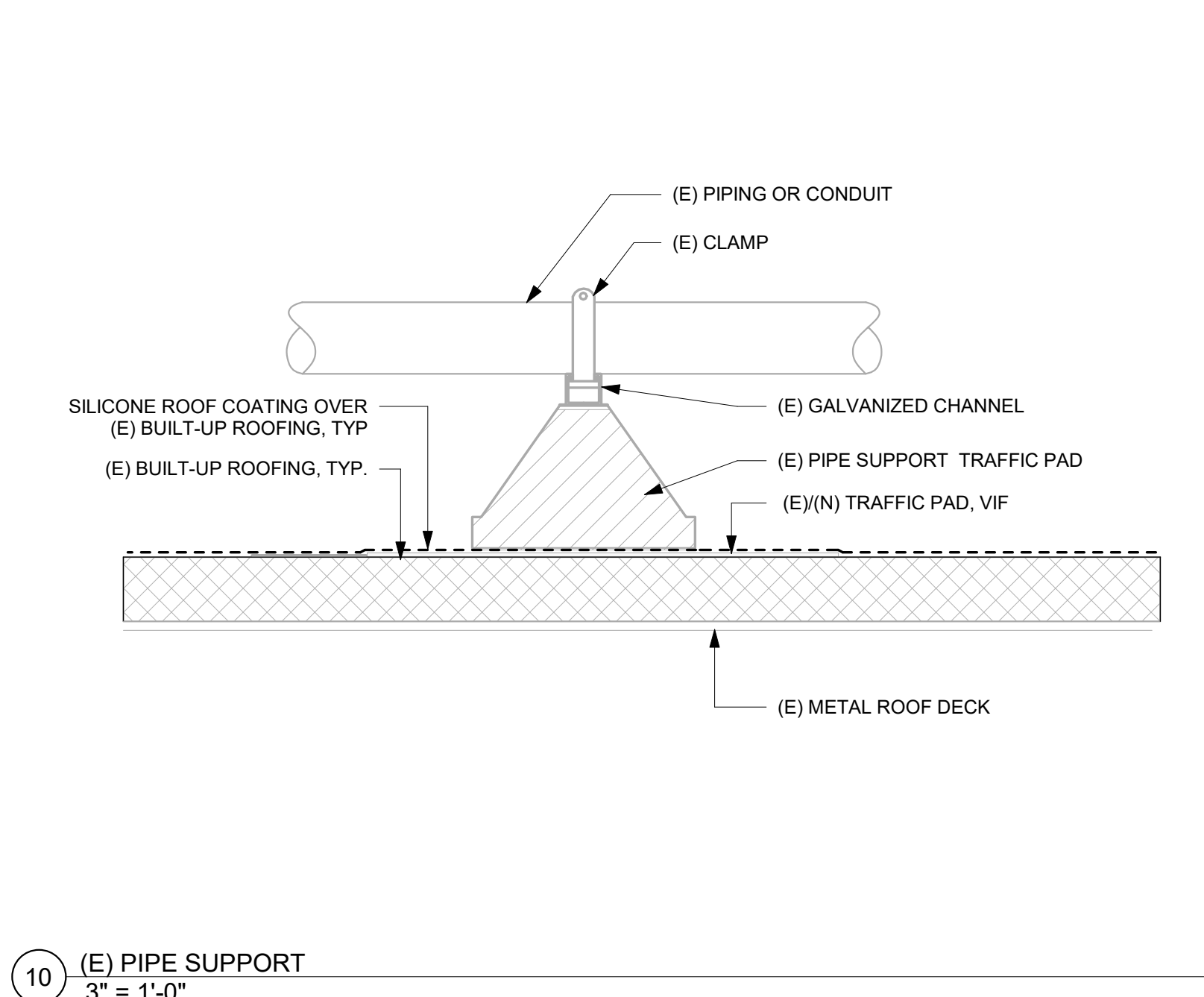
5 (E) VENT PENETRATION W/SHEET METAL COLLAR  
3" = 1'-0"



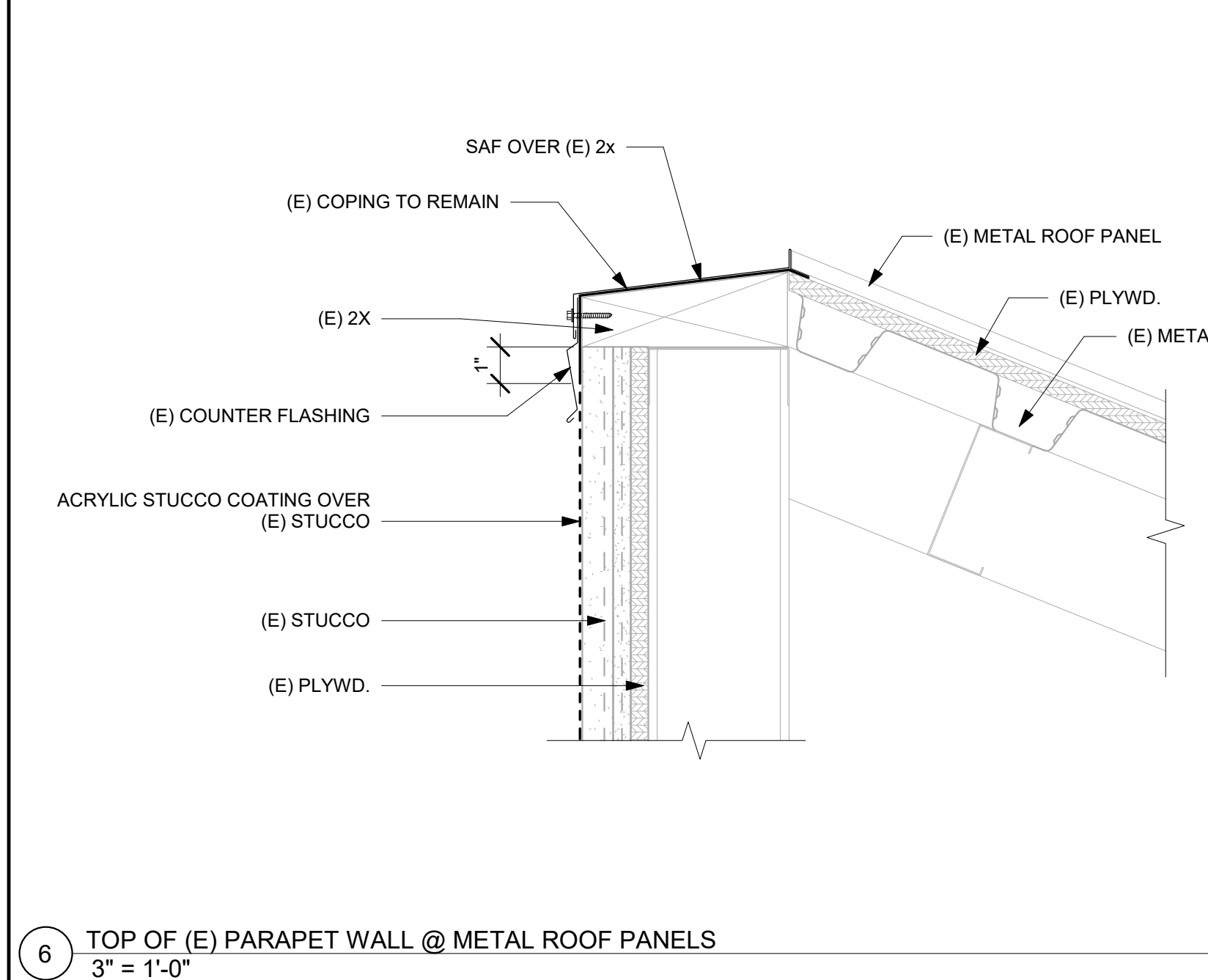
1 (E) LOW PARAPET WALL @ BLDG. B  
3" = 1'-0"



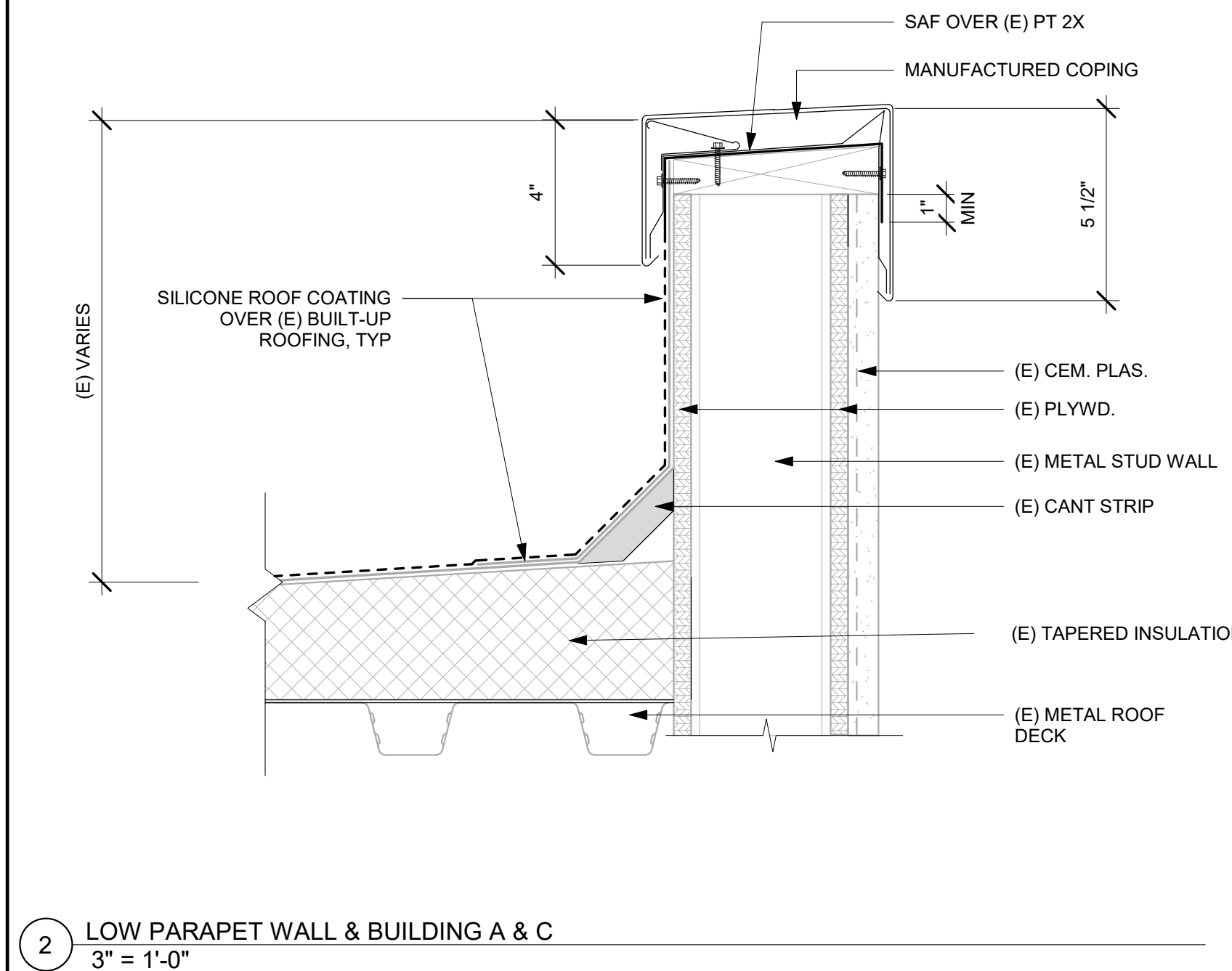
14 (E) PIPE PENETRATION  
3" = 1'-0"



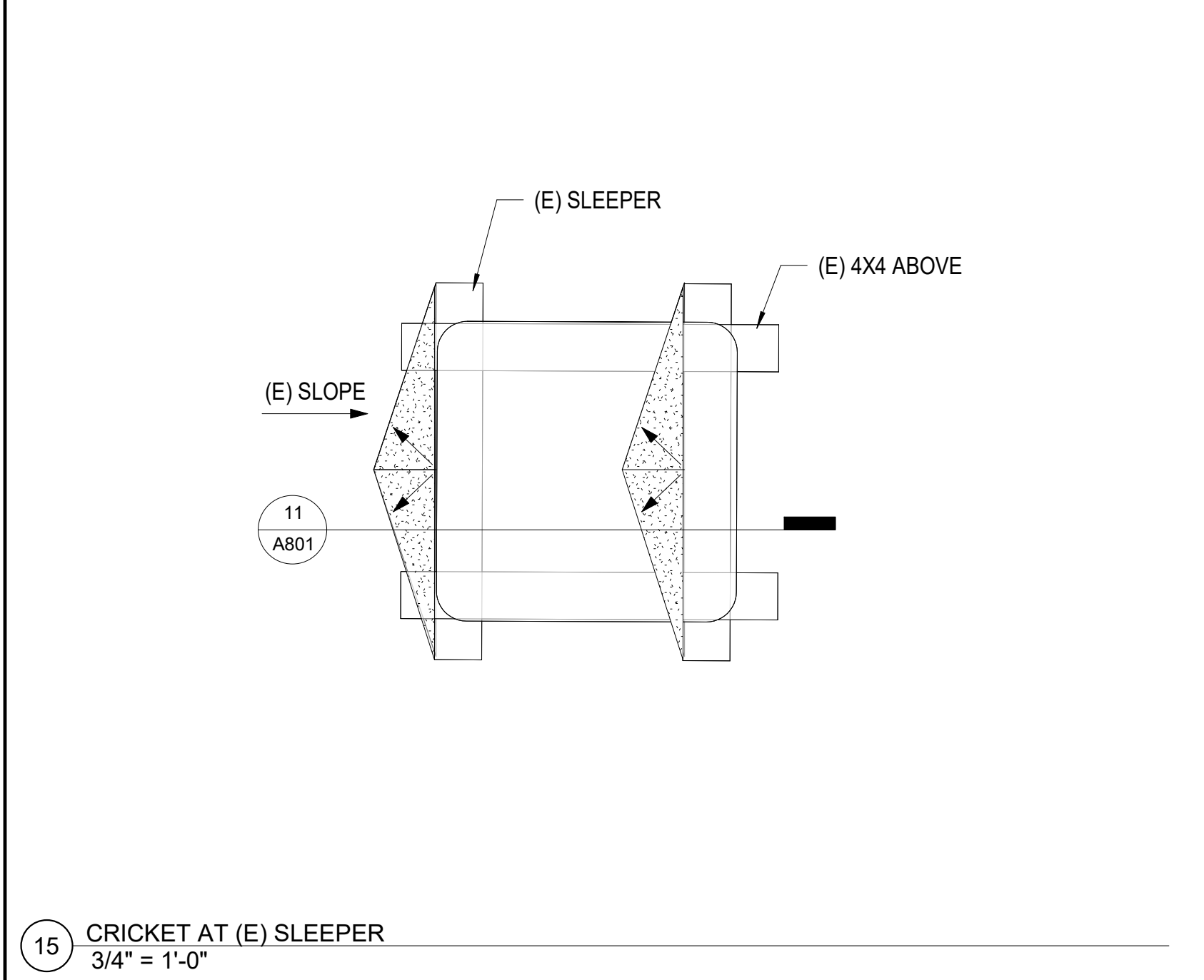
10 (E) PIPE SUPPORT  
3" = 1'-0"



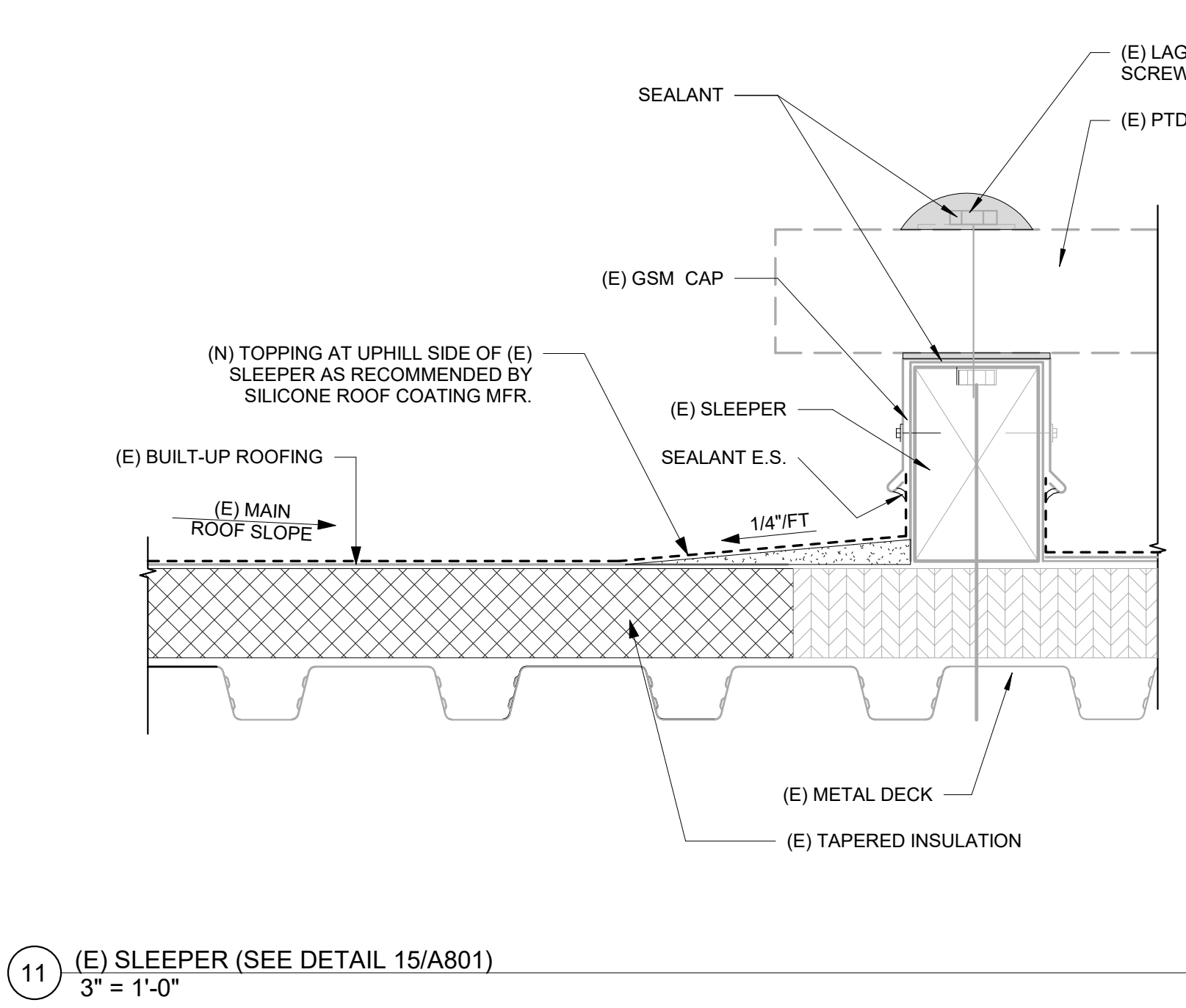
6 TOP OF (E) PARAPET WALL @ METAL ROOF PANELS  
3" = 1'-0"



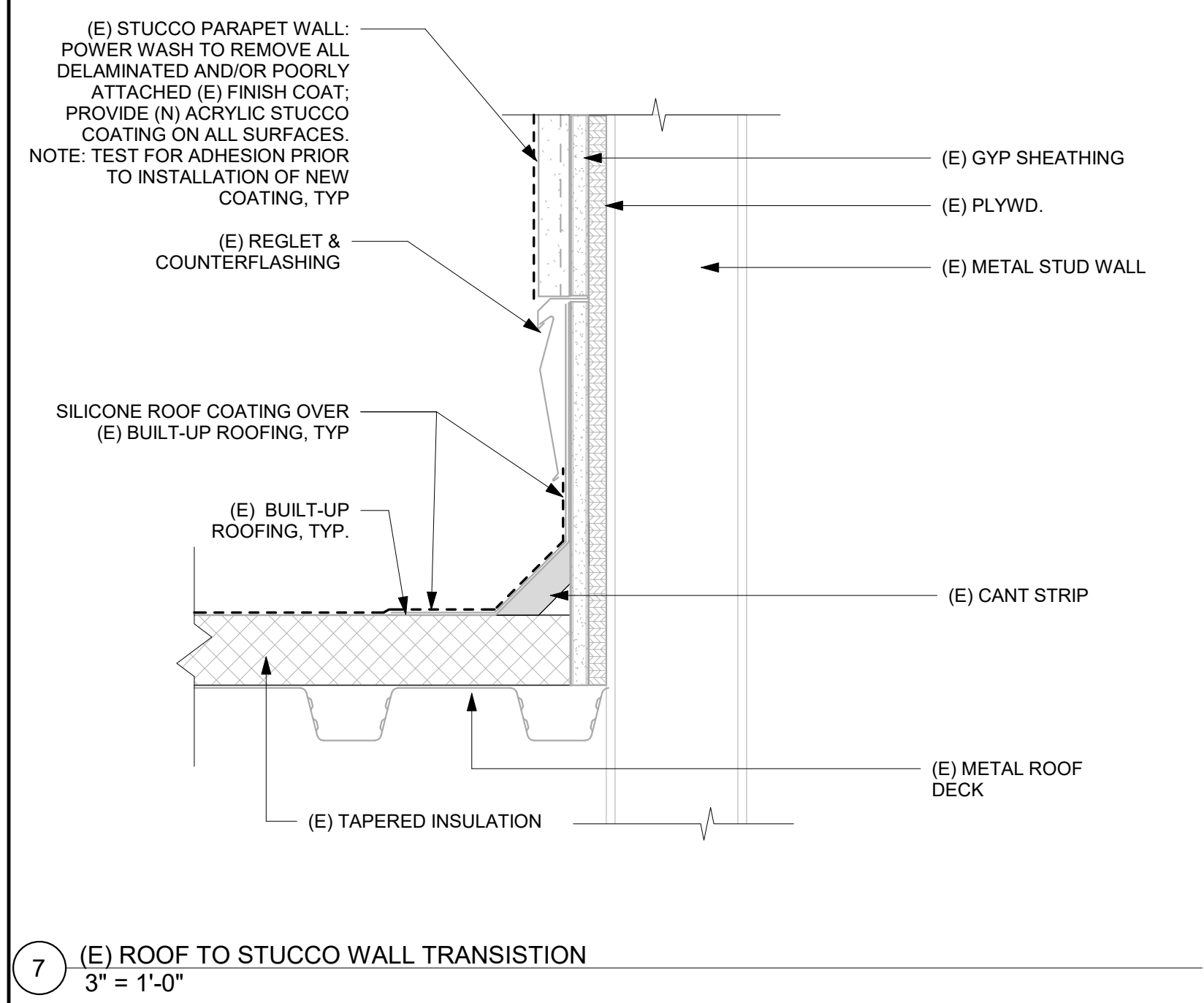
2 LOW PARAPET WALL & BUILDING A & C  
3" = 1'-0"



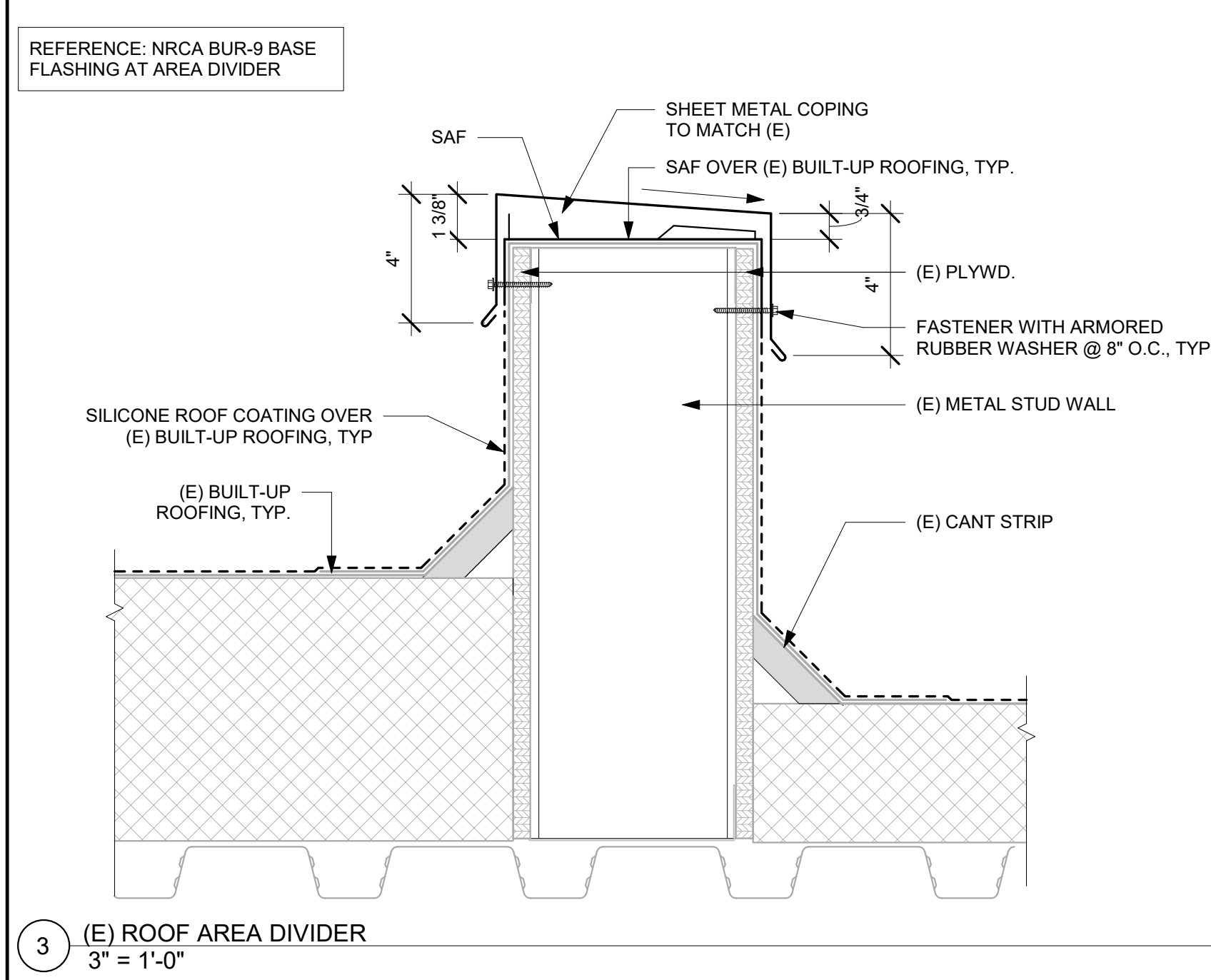
15 CRICKET AT (E) SLEEPER  
3/4" = 1'-0"



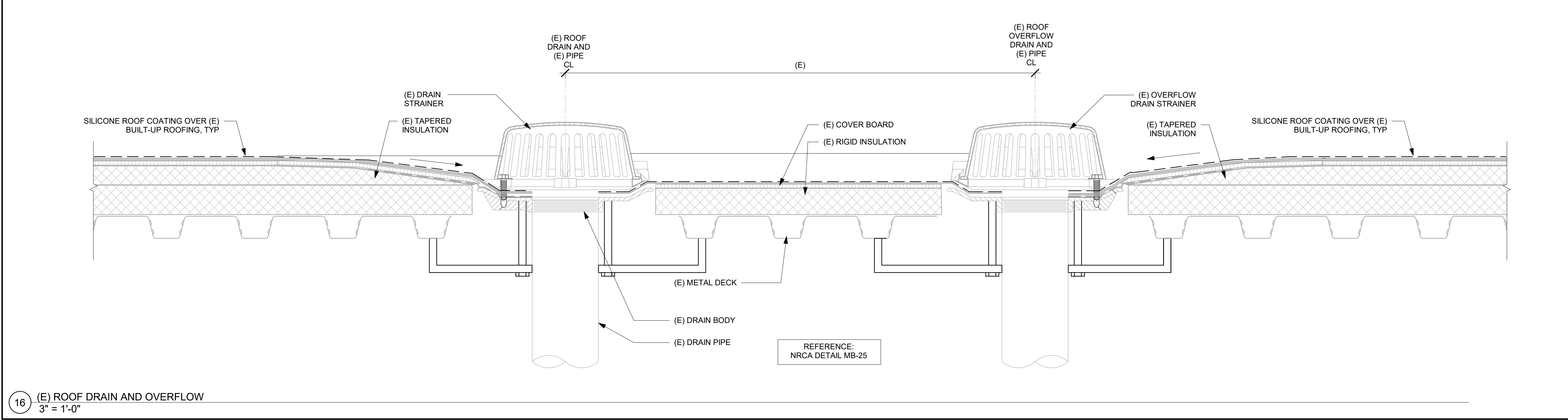
11 (E) SLEEPER (SEE DETAIL 15/A801)  
3" = 1'-0"



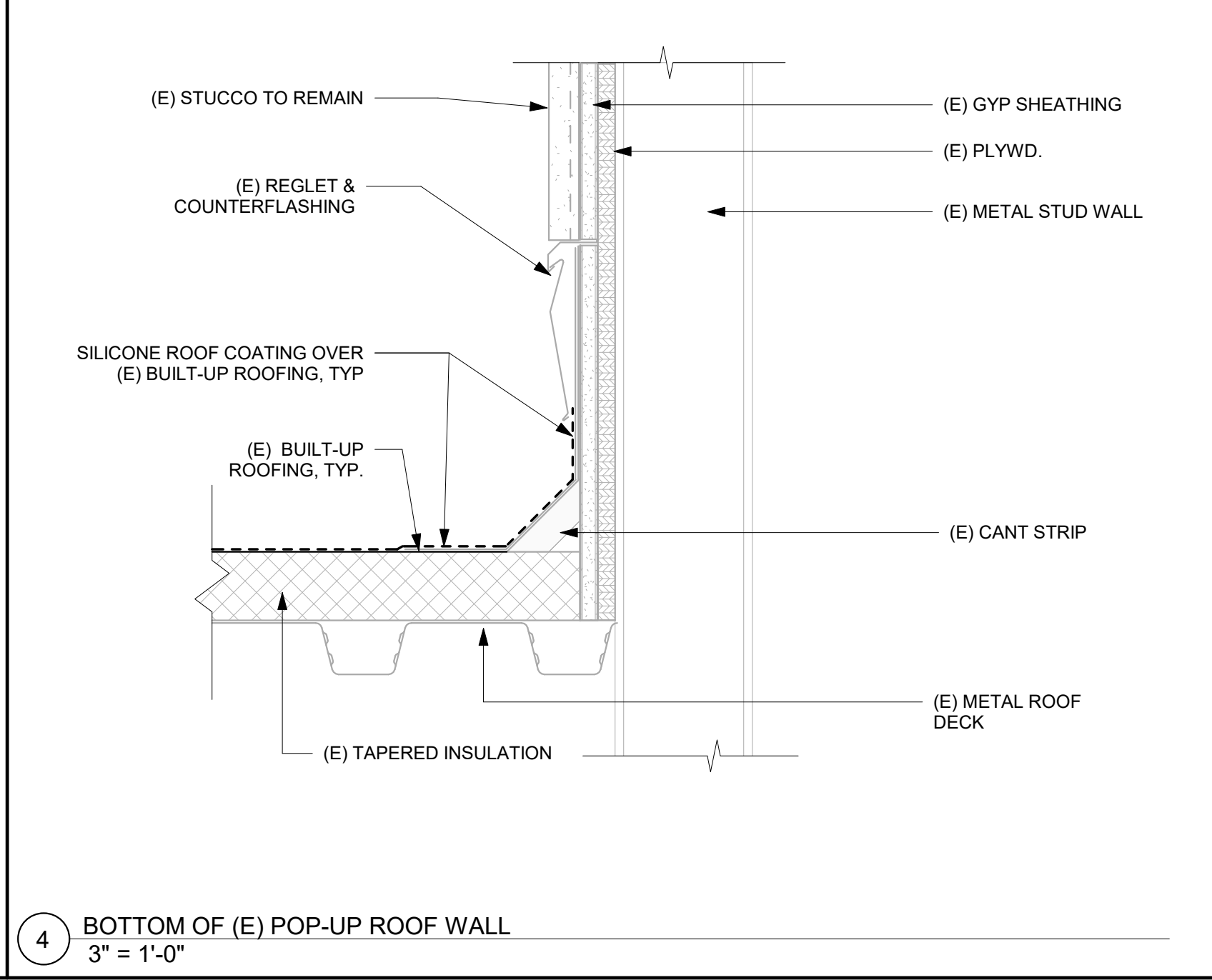
7 (E) ROOF TO STUCCO WALL TRANSITION  
3" = 1'-0"



3 (E) ROOF AREA DIVIDER  
3" = 1'-0"



16 (E) ROOF DRAIN AND OVERFLOW  
3" = 1'-0"



4 BOTTOM OF (E) POP-UP ROOF WALL  
3" = 1'-0"

REVISION	DESCRIPTION	INITIAL	DATE

ISSUED FOR PROGRESS REVIEW  
ISSUED FOR PLAN CHECK  
ISSUED FOR PERMIT  
ISSUED FOR BID 05/26/22  
ISSUED FOR CONSTRUCTION  
SEAL:

AOR:

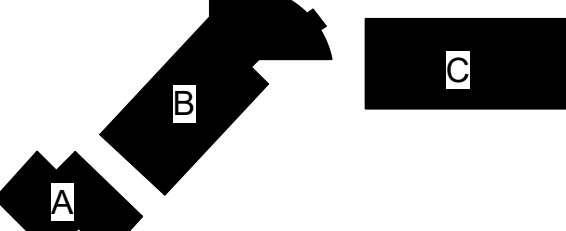


117 PARK PLACE  
POINT RICHMOND  
CALIFORNIA 94801  
(510) 236-7435  
www.intres.com

PROJECT:  
**BAHIA VISTA  
ELEMENTARY  
SCHOOL -  
ROOFING  
UPGRADE AND  
IMPROVEMENTS**

125 BAHIA WAY  
SAN RAFAEL, CA. 94901

KEY PLAN

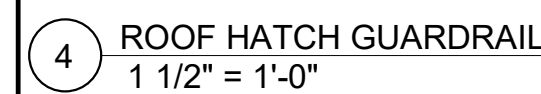
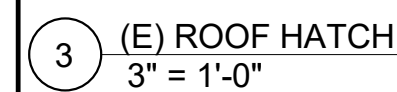
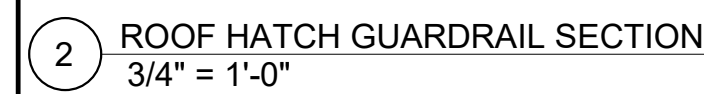
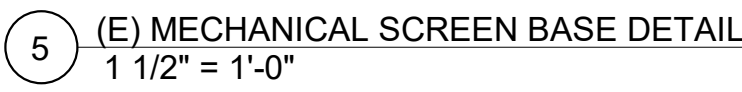
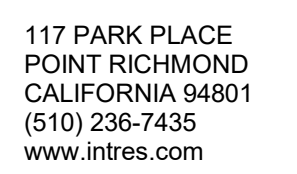


SHEET TITLE:  
**ROOF DETAILS**

PROJ. NO.	2020-036-01
PREPARATION AND REVIEW	
DRAWN BY:	MT
DESIGNER:	GYN
PROJ MGR:	AMB
PEER REVIEW:	Checker
SHEET NUMBER:	

**A801**



AOR

PROJECT:
----------

125 BAHIA WAY  
SAN RAFAEL, CA. 94901

KEY PLAN



SHEET TITLE:

## ROOF DETAILS

A802

OF